

Health Equity 101



WELCOME

TODAY'S AGENDA

Review of objectives

Health Equity

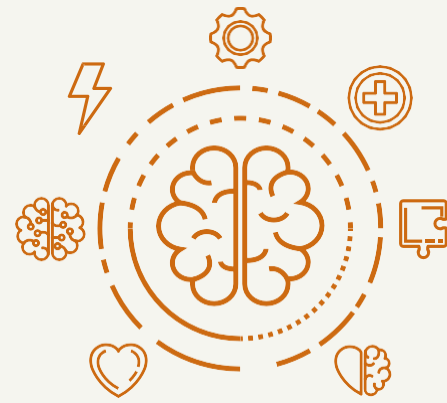
Social Risk Factors (SRF)

Group discussion

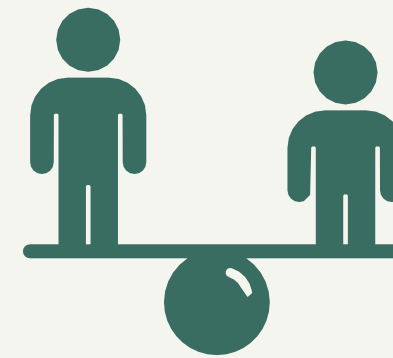
Debrief

Preparing for next class

OBJECTIVES



Explain how Social Drivers of Health (SDoH) become Social Risk Factors



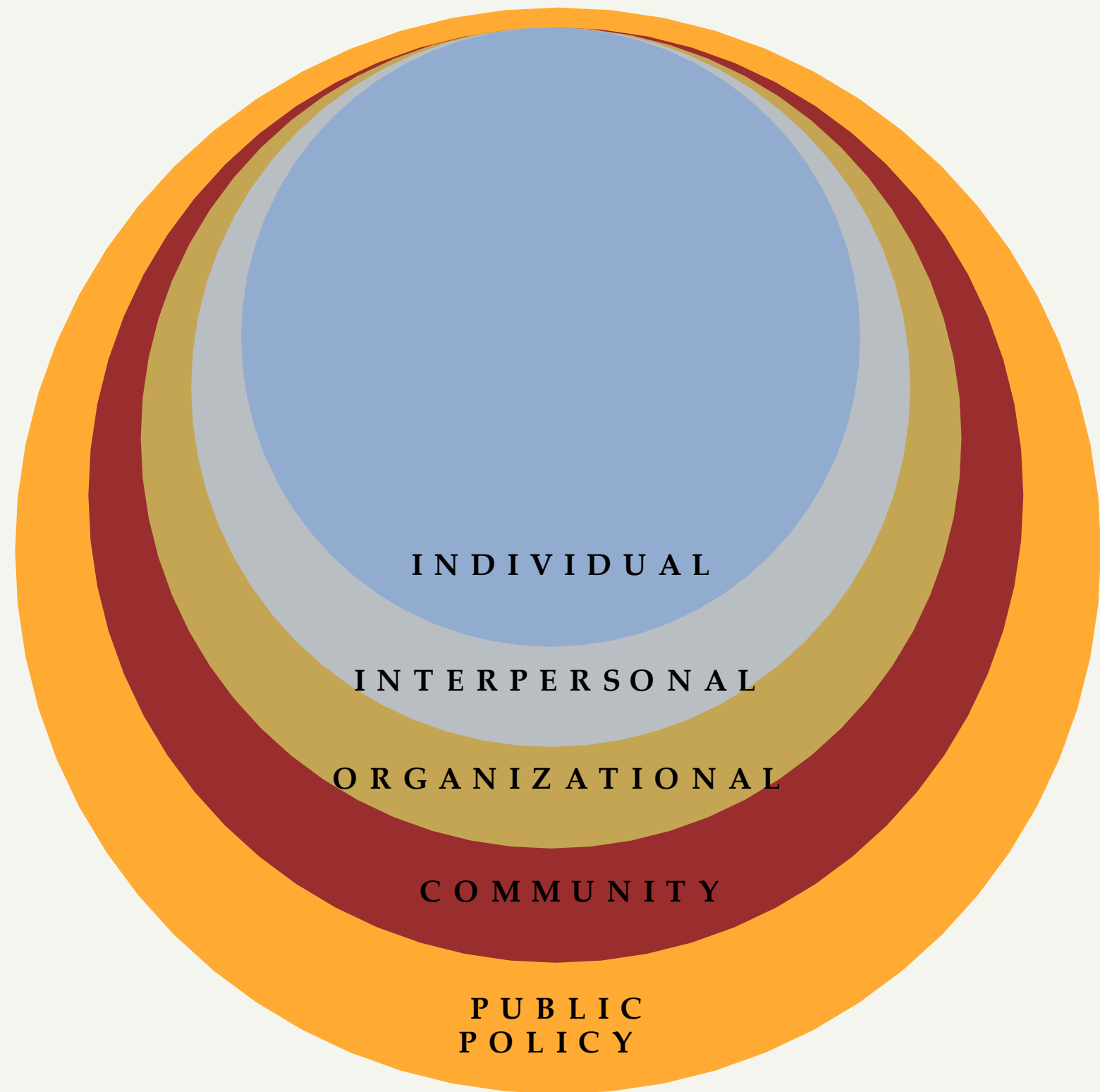
Examine how SDoH and SRF impact health equity in your community



HEALTH EQUITY

Everyone has a fair and just opportunity to as health as possible.

The removal of obstacles to health including; poverty, discrimination, powerlessness, lack of access to fair pay, quality education, housing, safe environments, and healthcare (Bravemen, Arkin, Orleans, Proctor, & Plough, 2017)



SOCIAL ECOLOGICAL MODEL

SOCIAL DRIVERS OF HEALTH

A key tool to identify and address the social and communal factors that may put people at risk.

SDoH are shaped by policies, distribution of power and resources, and impact communities at the upstream and downstream level.

(Alderwick & Gottlieb, 2019)



TODAY'S TOPIC

SOICAL RISK FACTORS

Social Risk Factors- include poverty, isolation, minority race/ethnicity, limited community resources that actively negative impact life expectancy, play an active role in a persons health, and account for significant gaps in a persons health and have a direct influence on health on an individual level (Alderwick & Gottlieb, 2019).

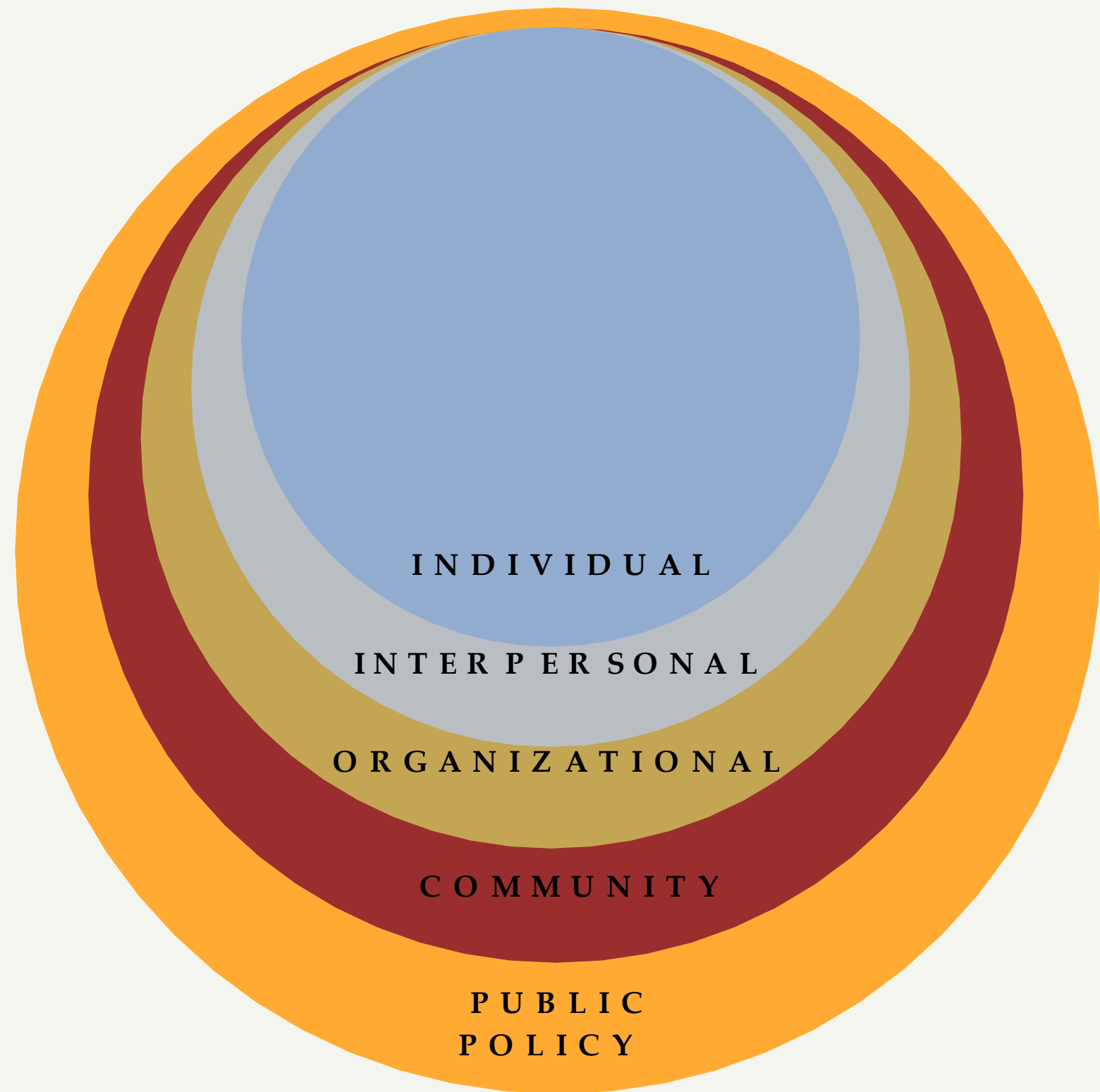
SOICAL DRIVER OF HEALTH OR A SOCIAL RISK FACTOR

SDoH

- Redlining
- Income inequality
- Chronic disease
- Infrastructure
- Affect whole population

SRF

- No direct access to food/jobs in your neighborhood
- Lack of health insurance access
- Social isolation
- Direct impact on an individual



SOCIAL ECOLOGICAL MODEL

SOCIAL RISK FACTORS

Can be used to identify and address SDoH and the individual factors that put someone's health at risk.

SRF's are specific adverse social conditions that can predict mortality at a similar rate as clinical risk factors.

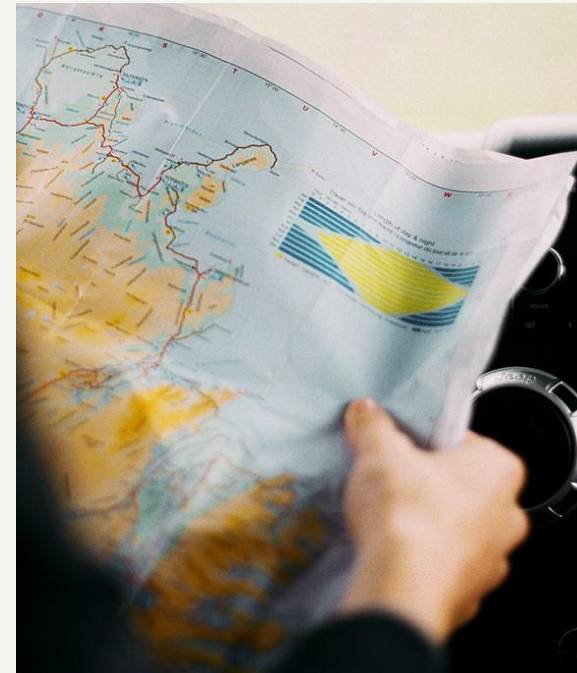
(Alderwick & Gottlieb, 2019)

HOW SOCIAL DRIVERS OF HEALTH BECOME SOCIAL RISK FACTORS



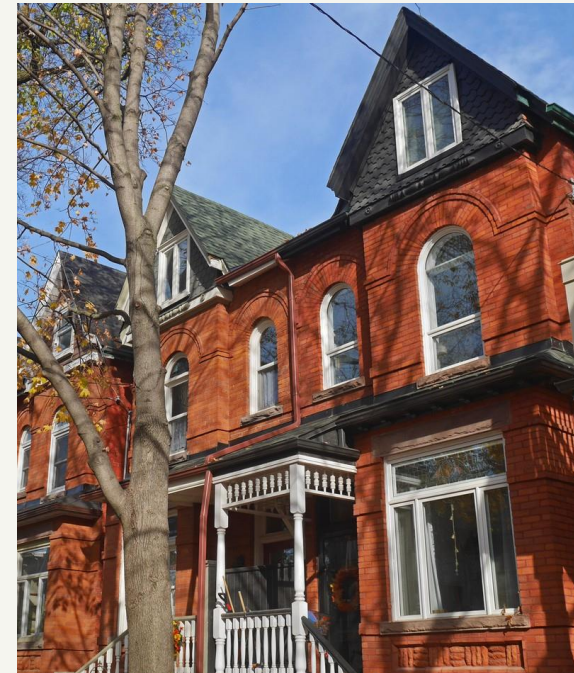
Chronic health conditions

- Health insurance access
- Medication access
- Unequal working conditions



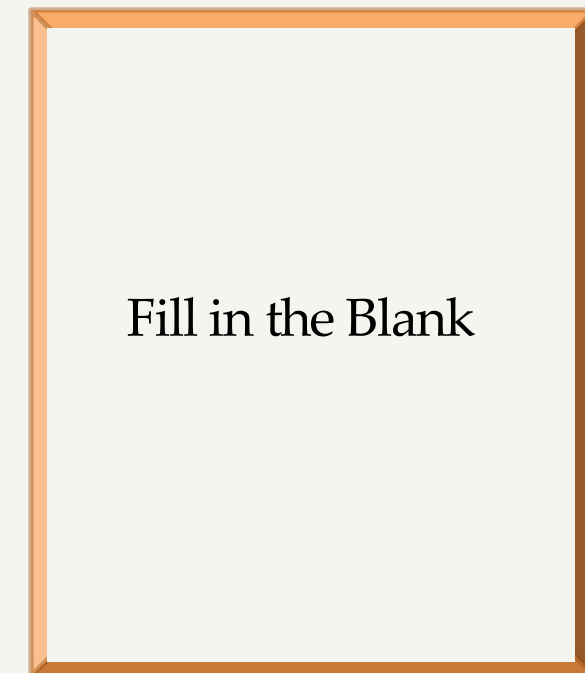
Geography

- Eligibility
- Employment
- Status



Redlining

- Income
- Education
- Food stability



Fill in the Blank

?????

- ?
- ?
- ?

SDOH

SRF

GROUP DISCUSSION

1- minute to write your answer down to each question individually

5 – minutes in your group to discuss your answers. What are the similarities and differences? Identify one person to report back for the group.

Question 1

How is the neighborhood you grew up in impacted by Social Drivers of Health, compared to the one you now live in?

Question 2

What are the hidden drivers of health, good or bad that impact your daily life?

Question 3

How do your Social Risk Factors differ from your Social Drivers of Health?

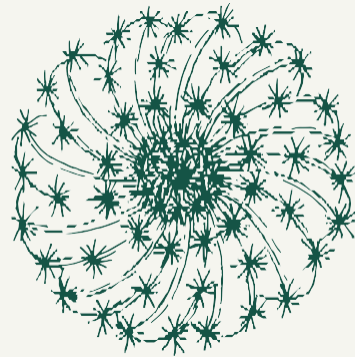
LET'S DEBRIEF

What did we learn?

Report what we learned in our groups

What can I clarify before we preview next weeks class session?

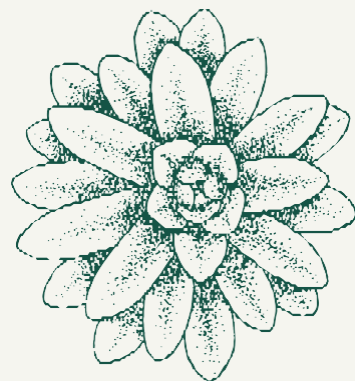
**PREPARING
FOR OUR
NEXT CLASS**



Activity 1

Spend 20 minutes using multiple modes of transportation (walking, biking, driving, etc.) to explore the south side of campus and identify how the infrastructure is influencing a person's health. How are SDoH and SRF influenced by the built environment?

Be prepared to map out what you see and discuss in class.



Activity 2

Spend 20 minutes using multiple modes of transportation (walking, biking, driving, etc.) to explore the north side of campus and identify community services that may influence a person's health. How are SDoH and SRF influenced by accessibility of services?

Be prepared to map out what you see and discuss in class.

References

Alderwick, H. & Gottlieb, L. (2019, June). Meanings and understandings: A social determinates of health lexicon for health care systems, 97.
<https://www.milbank.org/quarterly/articles/meanings-and-misunderstandings-a-social-determinants-of-health-lexicon-for-health-care-systems/>

Bravemen, P., Arkin, E., Orleans, T., Proctor, D., & Plough A. (2017, May 1). What is health equity?
<https://www.rwjf.org/en/library/research/2017/05/what-is-health-equity-.html>

